



Fig.1 Germination of peanut under pre-emergence and post-emergence damping-off conditions



Fig 2. Pathogen mycelial mass colonizing peanut plants at the early growth stage



(a)



(b)

Fig.3 Plant condition. (a) Condition of plants without treatment, (b) Condition of plants with Rhizobium + bacteria + APH fungi

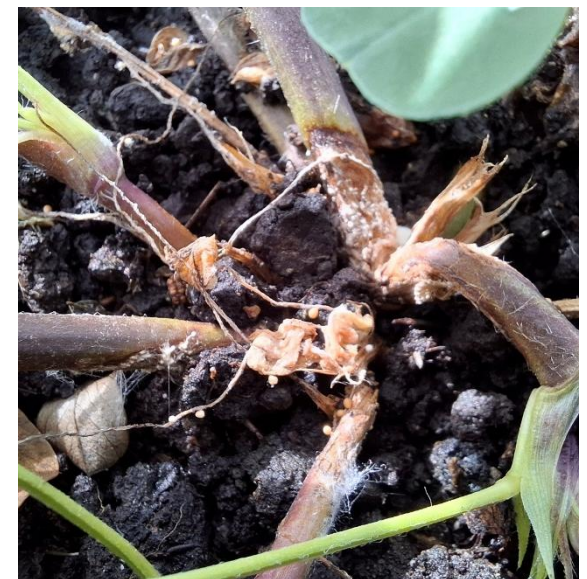


Fig 3. Lesions on peanut stems and the form of sclerotia